

@checklist!

Check the boxes to make sure you've covered the basics.

Questions? Reach out to customer service at +46 (0)910-73 50 00, selection 4 or contact@skelleftea.se

SKELLEFTEÅ.

BEFORE THE MOVE

- Make sure you have a work contract and that your employer has initiated an application for a work permit for you.
- Consult with the Swedish Embassy in your home country to find out more information about what is required for your application for a work permit.
- Make sure that you have all the vaccinations you need before the move.
- Download the banking and housing checklist to get the to-do list.
- Make sure the postal services that deliver your mail in your home country are aware of your new address in Sweden.
- Visit www.petrelocation.com for more information if you are planning on moving with your pet.
- Contact the Swedish transport agency for more information and requirements if you want to bring your vehicle.

AUTHORITIES AND SERVICES IN SWEDEN

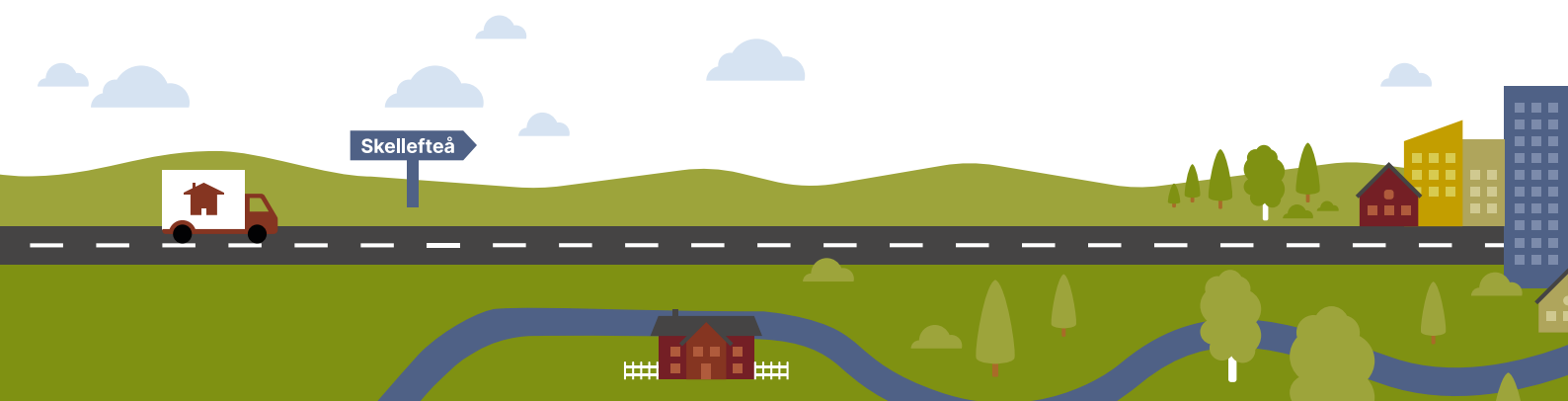
- Make sure that you start your application for the Swedish personal ID in time. Read more about the process at www.skatteverket.se
- Apply for a Swedish ID card at the police station or at the Swedish tax agency (requires a Swedish personal number).
- Make sure to have the right insurance coverage. For more information contact an insurance company.

- Make sure to get a Swedish mobile phone deal of your choice.
- Ask your landlord or real estate agent about internet providers.
- Visit the website www.officialswedishservices.se for more information about what to expect when moving to Sweden.
- Make sure to register yourself in Skellefteå municipality to get all the benefits of being a resident: www.skatteverket.se

HEALTHCARE

- Get an ICE (In Case of Emergency) contact registered in your phone or at your healthcare center.
- Bring your important healthcare documentation to register at the healthcare facility of your choice.
- Register at a dentist of your choice.
- Contact Region Västerbotten at www.1177.se/vasterbotten if you have more detailed questions regarding your health.
- If you have pets, register with a veterinary.
- In case of ill-health, your first contact should be with your healthcare centre, which opens for calls in the early morning, or by calling 1177 at any time. You should only visit the emergency room, or call 112, in an emergency.

INFORMATION ABOUT WORK AND EMPLOYMENT AND LEISURE ACTIVITIES →



@checklist!

Check the boxes to make sure you've covered the basics.

Questions? Reach out to customer service at +46 (0)910-73 50 00, selection 4 or contact@skelleftea.se

SKELLEFTEA.

WORK AND EMPLOYMENT

- If you've been offered a job in Sweden, your employer needs to start the process for a work permit. Get more information from your employer.
- Check up the best route for commuting between your work and residence.
- Contact the bus-station in Skellefteå to get information regarding your alternatives for transport.
- If you plan to drive to work, ask your employer about parking spaces.
- Cycling is possible all year round, so you can use a bicycle as a means of transport.
- Your Swedish employer will insure you - check with them re: cover.
- Sweden encourages unions, so check with colleagues which union is best for your job.
- Ask your employer if you are eligible for unemployment benefits in case of temporary unemployment or visit www.arbetsfor-medlingen.se for more information.
- To validate your educational qualifications, visit www.uhr.se/en/start/

LEISURE ACTIVITIES

- You will find many different leisure associations in Skellefteå. For more information: www.skelleftea.se/kontakt
- Get inspired on www.visitskelleftea.se/en/ – here you can find tips on restaurants, bars, cafes, libraries and more.
- Outdoor life is always nearby – check out the nearest floodlit path, outdoor gym, playground or hiking trail.
- Activities and meetings for newcomers take place on an ongoing basis – visit the municipality's Move-in pages for more information.
- Check Facebook for Skelleftea-based groups. These usually have many activity ideas.
- On the municipality's website under **Experience and do**, you will find more leisure tips: www.skelleftea.se/invanare

