

# @checklist!

Check the boxes to make sure you've covered the basics.

**Questions?** Reach out to customer service at +46 (0)910-73 50 00, selection 4 or [contact@skelleftea.se](mailto:contact@skelleftea.se)

**SKELLEFTEA.**

## BEFORE YOU MOVE

- Apply for the education you want to attend. Apply for a student visa once you have been admitted.
- Apply for a student visa at your local Swedish embassy, or contact the Swedish immigration agency, [www.migrationsverket.se](http://www.migrationsverket.se). The visa must be granted before your arrival in Sweden.
- Ensure you have all the necessary vaccinations.
- Download the banking and housing checklist.
- Visit [www.petrelocation.com](http://www.petrelocation.com) for more information if you are planning on moving with your pet.

## AUTHORITIES AND SERVICES IN SWEDEN

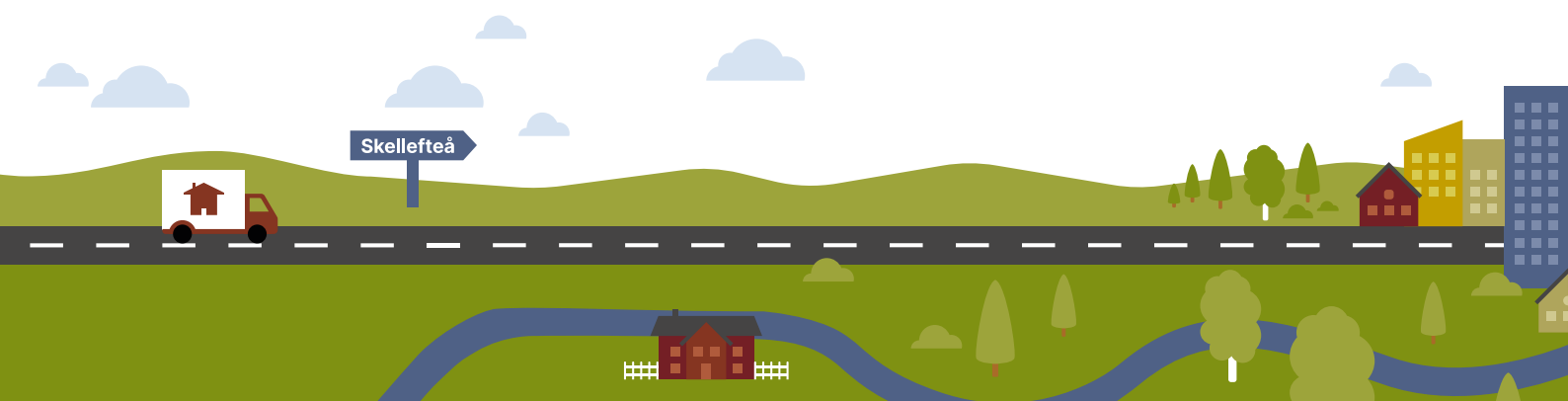
- Register with the Swedish population register if you are planning to stay longer than a year. [www.skatteverket.se](http://www.skatteverket.se)
- Make sure to have the right insurance coverage. For more information contact an insurance company.
- Make sure to get a Swedish mobile phone deal of your choice.
- Ask your landlord or real estate agent about internet providers.

- Visit the [www.officialswedishservices.se](http://www.officialswedishservices.se) for more information about what to expect when moving to Sweden.
- Check if you need to validate any of your educational qualifications Visit [www.uhr.se/en/start/](http://www.uhr.se/en/start/) for more information.

## EDUCATION AND SCHOOL

- Check which study materials you need before your course starts, so that you have everything ready in good time.
- Check local transport to your university.
- Contact the bus station in Skellefteå to find out more about your travel options.
- Cycling is possible all year round, so you can use a bicycle as a means of transport.
- Check your university's website for details of local amenities.
- Confirm your education start date and check if there are any pre-courses needed prior to your course proper.
- Contact your place of study for information regarding the benefits of being a resident.

## MORE INFORMATION ABOUT HEALTHCARE AND LEISURE ACTIVITIES →



# @checklist!

Check the boxes to make sure you've covered the basics.  
**Questions?** Reach out to customer service at +46 (0)910-73 50 00, selection 4 or [contact@skelleftea.se](mailto:contact@skelleftea.se)

**SKELLEFTEA.**

## HEALTHCARE

- Get an ICE (In Case of Emergency) contact registered in your phone or at your healthcare center.
- Make sure that you have all the vaccinations you need before the move.
- Bring your important healthcare documentation to register at the healthcare facility of your choice.
- Register at a dentist of your choice.
- Contact Region Västerbotten at [www.1177.se/vasterbotten](http://www.1177.se/vasterbotten) if you have more detailed questions regarding your health.
- If you have pets, register with a veterinary.
- In case of ill-health, your first contact should be with your healthcare centre, which opens for calls in the early morning, or by calling 1177 at any time. You should only visit the emergency room, or call 112, in an emergency.
- If in higher education, check with your university to see if you qualify for student support and healthcare.

## LEISURE ACTIVITIES

- You will find many different leisure associations in Skellefteå. For more information: [www.skelleftea.se/kontakt](http://www.skelleftea.se/kontakt)
- Get inspired on [www.visitskelleftea.se/en/](http://www.visitskelleftea.se/en/) – here you can find tips on restaurants, bars, cafes, libraries and more.
- Outdoor life is always nearby – check out the nearest floodlit path, outdoor gym, playground or hiking trail.
- Activities and meetings for newcomers take place on an ongoing basis – visit the municipality's Move-in pages for more information.
- Check Facebook for Skelleftea-based groups. These usually have many activity ideas.
- On the municipality's website under **Experience and do**, you will find more leisure tips: [www.skelleftea.se/invanare](http://www.skelleftea.se/invanare)
- Check with your university for activities.

