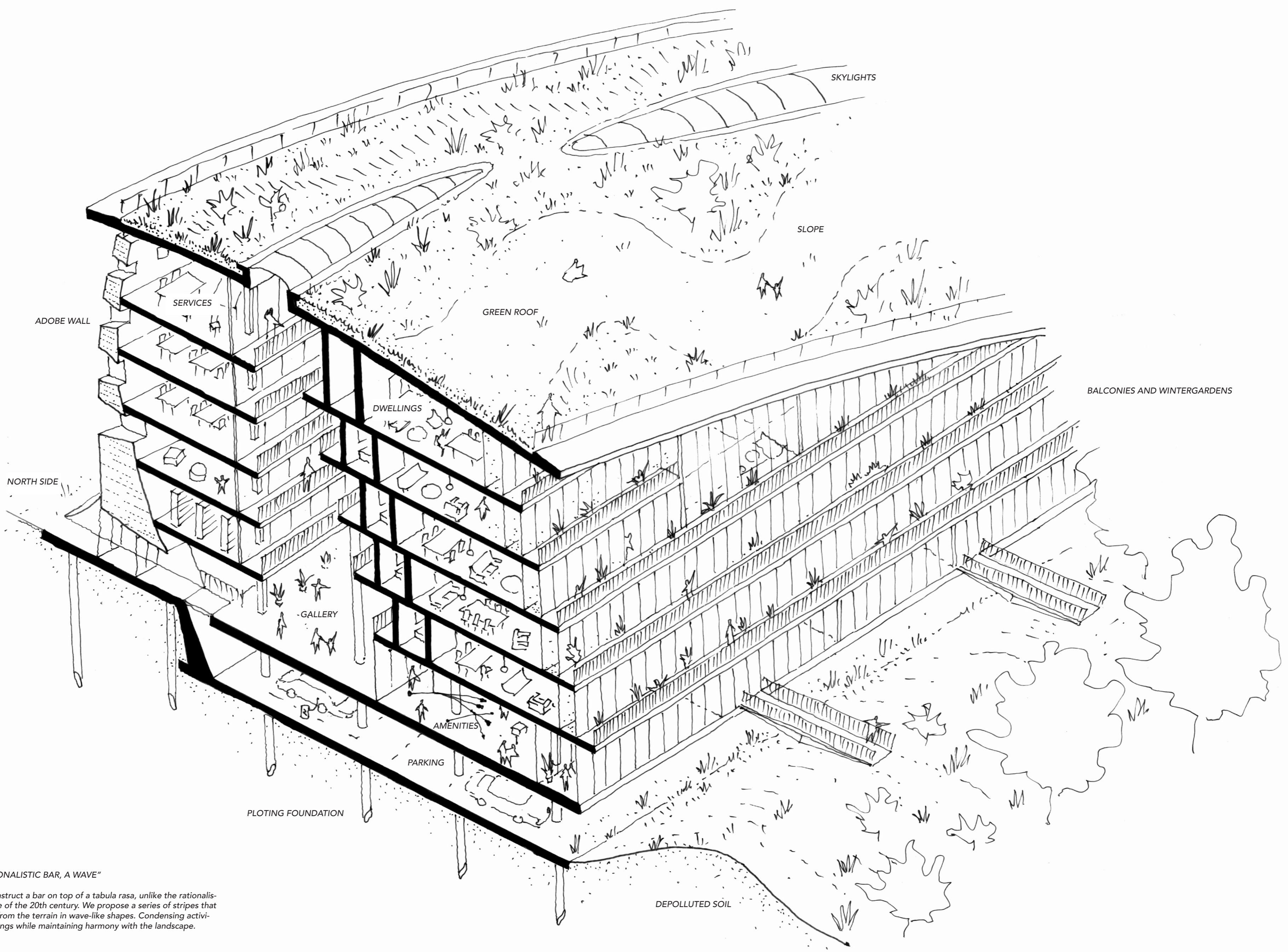


XK670 EARTHSHIP

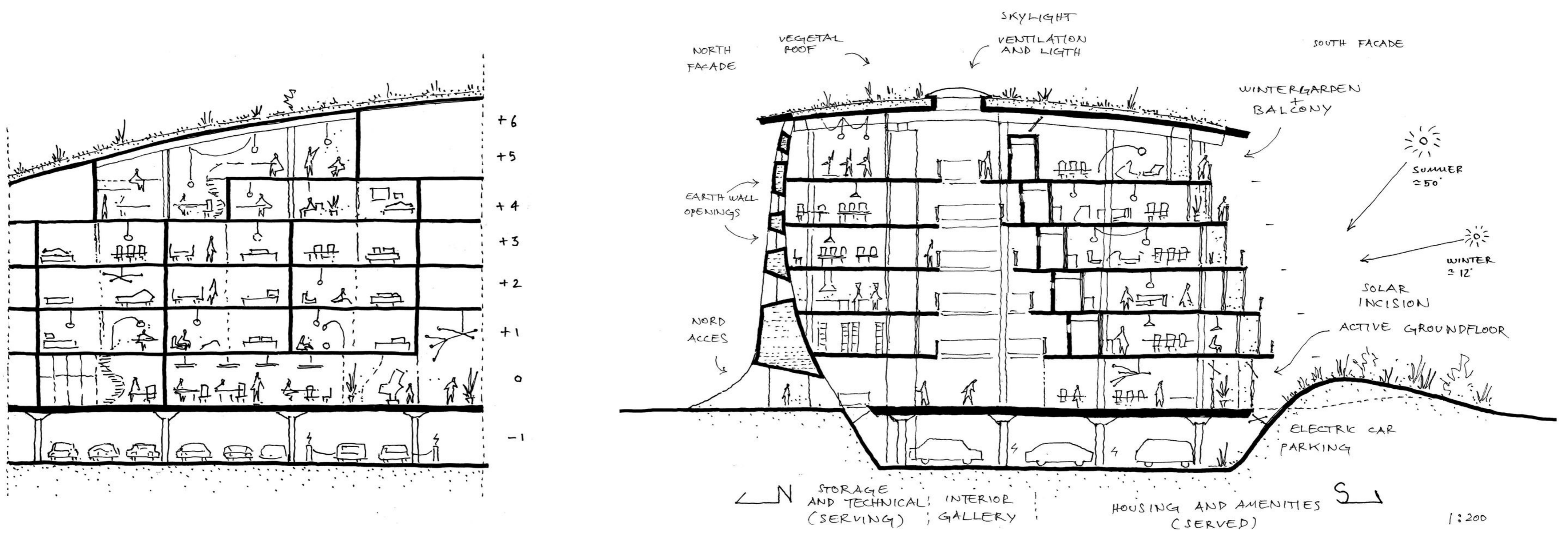
FROM SKELLEFTE RIVER BANK'S
REHABILITATION TO ITS INHABITATION



"NOT A RATIONALISTIC BAR, A WAVE"

We do not construct a bar on top of a tabula rasa, unlike the rationalistic architecture of the 20th century. We propose a series of stripes that are extruded from the terrain in wave-like shapes. Condensing activities and dwellings while maintaining harmony with the landscape.

SECTIONED AXONOMETRY OF THE A BUILDING



LONGITUDINAL SECTION

TRANSVERSAL SECTION

1:200